

WHAT'S HOT & WHAT'S NOT / COLOR MAKES A COMEBACK / HOT DISH

UTAH STYLE

& DESIGN

285
IDEAS
TO STEAL

DESIGNER LOOKS, TIPS,
INSIDER SOURCES & MORE



MOUNTAIN
MODERN
PARK C

LOGAN
HIPPE
HAV

PRE-F
IN MO

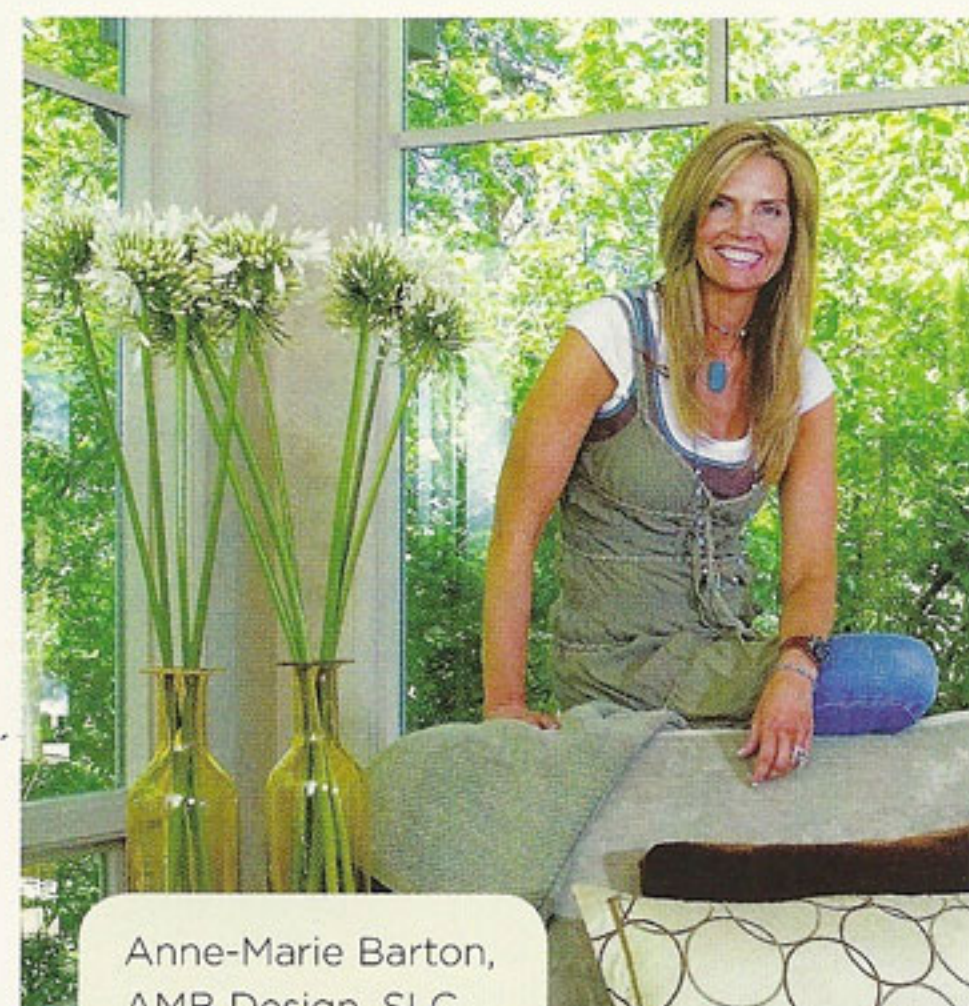
WINTER 2010



0 74470 91829
DISPLAY UNTIL MAR
UTAHSTYLEANDDES



CLOCKWISE FROM UPPER LEFT: Designers Jason Wilde and Sue Harman chose Benjamin Moore's "Medieval Times" green to create an informal ambience. A blue-green wall performs as a neutral backdrop in this bath. Designers Linda Johnson and Gregg Hodson used multiple greens in this Park City bedroom.



Anne-Marie Barton, AMB Design, SLC

GREEN IS RED HOT

Designer **Anne-Marie Barton** loves green and chooses the verdant color for cottages and timeless European abodes alike. She offers the following tips for using green in your home.

» **To make golden-green colored walls** more pronounced, pair them with cream molding. When featuring a clearer, primary green, white molding is a better choice.

» **Think beyond paint.** Today's glass mosaics, stone (Barton suggests Lago Azure), wall coverings and beautiful woods are wonderful ways to add green to an interior.

» **Avoid too much red** (mahogany or red oak) or yellow (golden oak lacking gray undertones) in the woods you choose for a green-tinted décor.

» **Consider shades other than grass-hued green.** Instead, Barton suggests using a golden, citrus green as a neutral and accenting it with earthy shades of saffron, tomato, nutmeg and cream. "Polished nickel hardware and fixtures round out this color story beautifully," she says.

» **If you're color-timid,** use rugs, pillows and smaller upholstered pieces as well as a single accent wall (with wall covering or paint) to showcase more intense greens in your home.

toned, no-fail options offer something for every décor.

Part of green's appeal is its versatility—it can be elegant or playful depending on the shade you select. Sage is sophisticated while lime is vivacious. If you want a calm, refined look, for example, pair an understated green such as sage or celery with light-colored, gray-tone woods and natural linen upholstery. These subtle greens perform as today's new neutrals, standing out by actually blending in. If you want a bouncy, spunky ambience, on the other hand,

take a different tack. Consider contrasting a bright grassy green with a dark wood finish and bright, white trim. Remember, if you choose a vibrant green, keep in mind that a little goes a long way. Accessories and accent elements—vases, lamps, a throw—may be all you need to make a powerful statement.

No matter which direction you decide to take, this year, give green a go. It's a sure-fire way to give your home up-to-the-minute styling while treating yourself to the color's comforting, easy-to-live-with character. ■

GREEN'S NEW HUES



Sherwin-Williams
Wheatgrass



Sherwin-Williams
Pickle



Farrow & Ball
Churlish Green



Farrow & Ball
Theresa's Green



Benjamin Moore
Cedar Green



Benjamin Moore
Lucia Teal